

## ATR6200/001 (UMTS)

## Advanced Train Repeater Module 2100 MHz

**ELECTRICAL SPECIFICATIONS**

Frequency Range Uplink (MHz)	1920-1980
Frequency Range Downlink (MHz)	2110-2170
Filter Bandwidth Adjustable (MHz)	0,5-15
Filter Settling Resolutions (KHz)	25
Gain Range	50-70 dB
Gain Step Resolution	1 dB
Gain Trail Dynamic Range	30 dB
Gain Trail Tracking Accuracy	2 dB
Output Power Composite (min)	+24 dBm (UL), +18 dBm (DL)
Noise Figure 70 dB Gain	8 dB
Maximum Input Power	+13 dBm
Power Supply	110 - 240 VAC, 110 DC or -24 to -48 VDC
Power Consumption	< 50 W

**MECHANICAL SPECIFICATIONS**

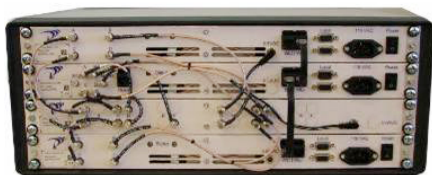
Dimensions WxDxH mm (in)	450 x 420 x 44 (17.7x 16.5 x 1.7)
Weight kg (lbs)	< 3 (6.6)
RF Connectors	SMA-Type Female

**ENVIRONMENTAL SPECIFICATIONS**

Temperature Range	-25°C to +45 °C
Humidity	EC 60068-2-56
Vibration	EN 300 019-1-5 V2, IEC-61373
Ingress Protection	IP21

**APPROVALS AND TESTS**

Safety	EN/ IEC 60 950
EMC	ETS 301 489-1
EMC for Railway Application	EN 50155, EN 50121-3-2
Radio	ETSI EN 300 609-4



xy: reserved for power supply type and remote control/GPS option.

All specifications are subject to change without notice. Contact your Powerwave representative for complete performance data.